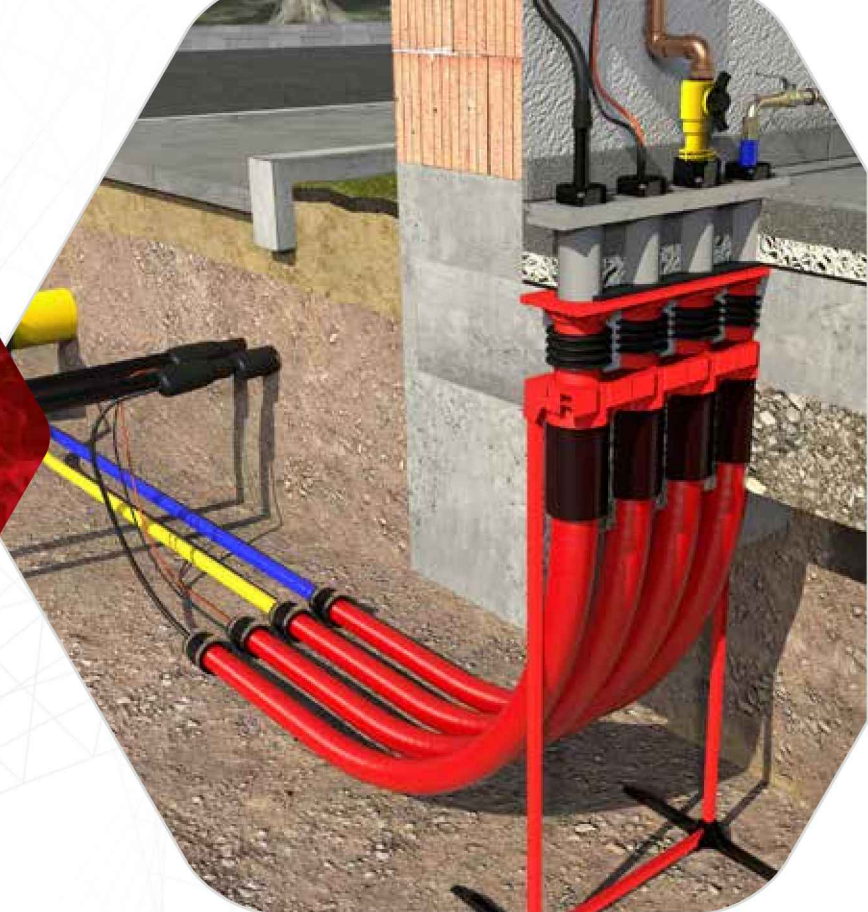




KRASO® Builder's Convenience Box - floor
Check the installation video
(just scan the QR code!)

Multi utility
connection
for buildings
without
basement



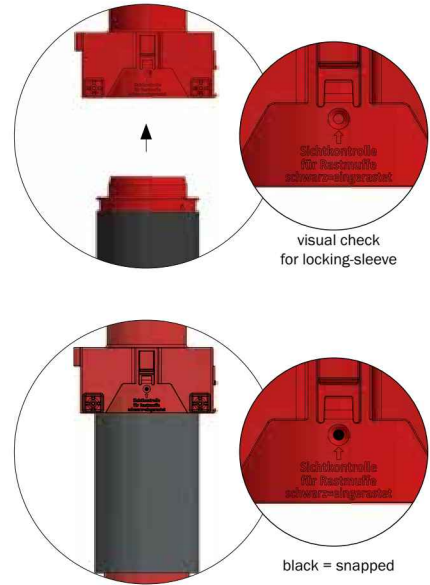
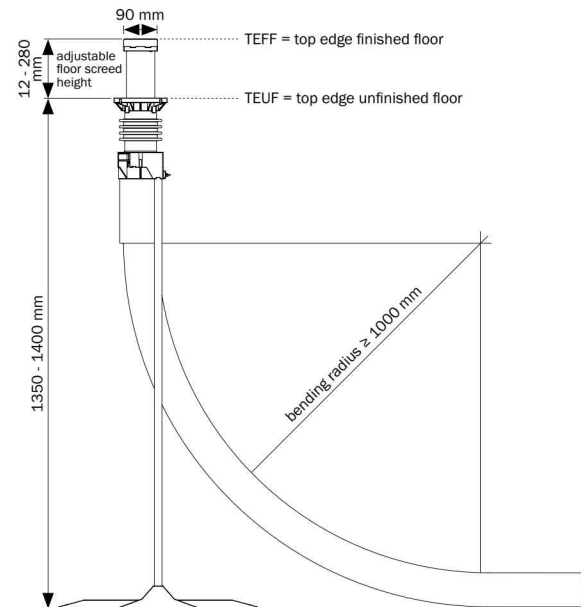
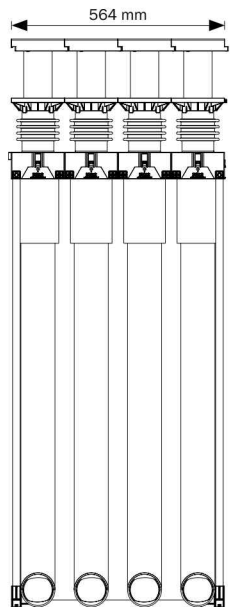
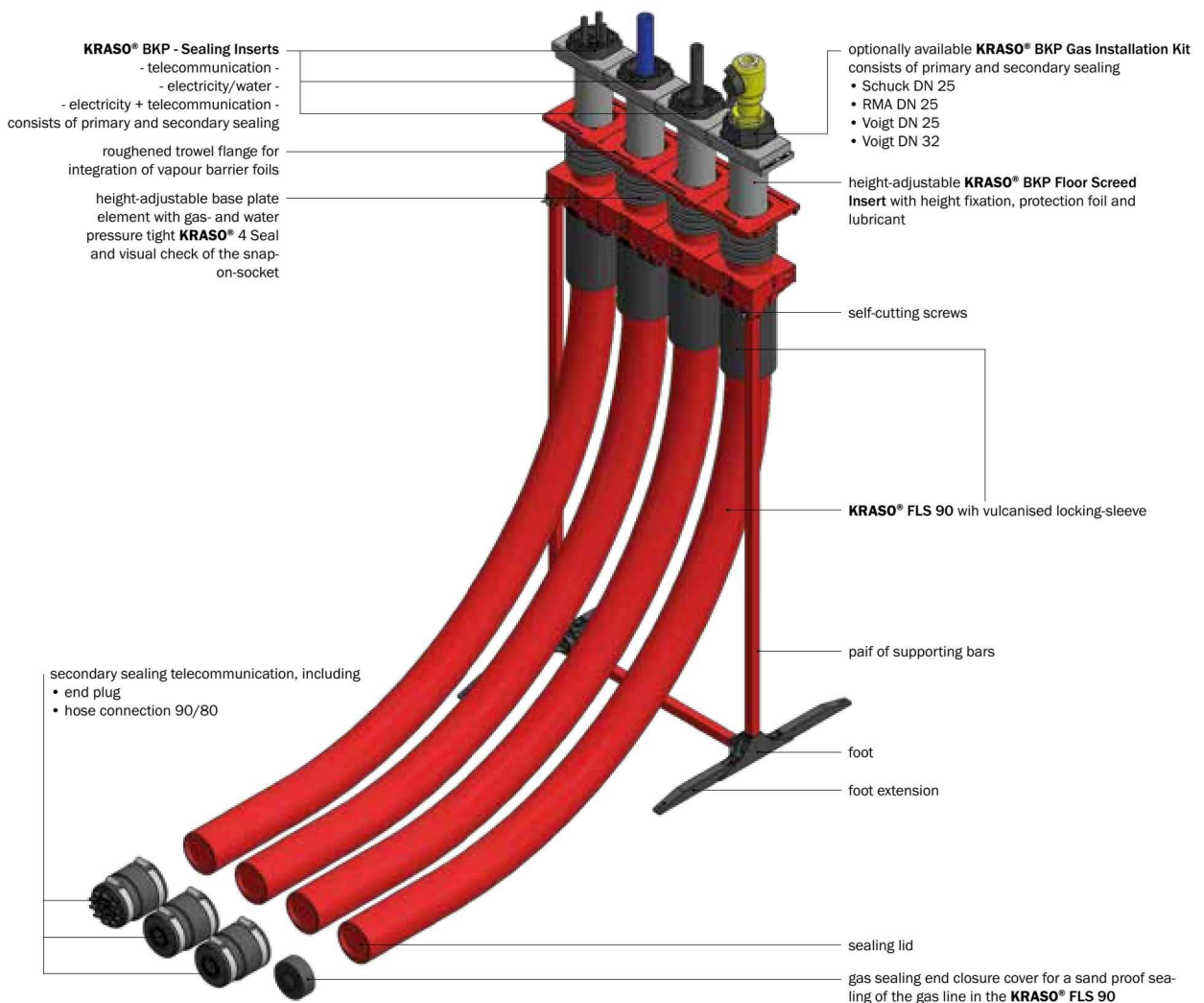
KRASO® Builder's Convenience Box - floor

The multi utility connection for
gas, water, electricity, telecommunication

- + The convenient solution for builders: **safe and tight installation of gas, water, electricity and telecommunication lines into buildings without basement!**
- + • **DVGW-certified according to VP 601:**
 - complete system is gas- and water pressure tight up to 1 bar!
 - Gas- and odour-tight – high-quality in terms of TA-Air!
 - Radon-tight! Resistant to methane gas!
 - **KRASO® 4 Seal** : exterior sealing of concrete: 10 bar!
- Overall system is gas- and water pressure tight up to 1 bar!
- + **Simple installation** due to stable installation device and visual check of the snap-on-socket - helps to avoid installation errors!
- + Hose diameter: **external 90 mm - internal 80 mm!**
- + For flush-mount installation in the base plate - no tripping hazards, no wall damages! Including building period installation cover.
- + **Easy integration of vapour barrier foils due to the roughened trowel flange!**
- + **Height-adjustable** base plate as well as floor screed.
- + **Optionally available KRASO® BKP Gas Installation Kits:**
 - gas utility connection Schuck DN 25
 - gas utility connection RMA DN 25
 - gas utility connection Voigt DN 25
 - gas utility connection Voigt DN 32
- + Split end plugs for easy installation!
- + Including extension set!
- + DafStB waterproof concrete guideline: stress class 1 + 2, DIN 18533 W1.1 -E

Internal
diameter
80 mm!





KRASO® BKP - floor - extension set

as an extension for the Flexible Empty Pipe System **KRASO® FLS 90** with on-site provided cable protective hose, including 2 x shrink hose 95/25 and 1 x adapter tube DN 90 with protective cover per system.

Included in all **KRASO® Builder's Convenience boxes - floor!**





KRASO® Builder's Convenience Box - floor **LG 5**

KRASO® Builder's Convenience Box (BKP) - floor, multi utility connection for supply lines (gas, water, electricity, telecommunication) for buildings without basement incl. **KRASO®** FLS 90, incl. installation kits for electricity/water (2 x), telecommunication, electricity + telecommunication as standard configuration for **KRASO®** BKP - floor - 4-fold, desired configuration for the **KRASO®** BKP - floor - 3-fold, 2-fold, 1-fold, **KRASO®** BKP Gas Installation Kits are optionally available | **DafStB** waterproof concrete guideline: stress class 1 + 2, DIN 18533 W1.1 -E

Type / Item	KRASO® BKP - floor			
Height-adjustable to TEUF* in mm from ... to ...	1350 - 1400			
Height-adjustable to TEFF** in mm from ... to ...	12 - 280			
Bending radius in mm	≥ 1000			
Dimensions floor screed insert wiping edge in mm	564 x 90	423 x 90	284 x 90	141 x 90

Type / Item	KRASO® BKP - floor - 4-fold			
incl. KRASO® FLS 90	4 x 3 metres	4 x 6 metres	4 x 9 metres	4 x 12 metres
KRASO® BKP - floor - 4-fold	963 €	1.197 €	1.431 €	1.665 €

Type / Item	KRASO® BKP - floor - 3-fold			
incl. KRASO® FLS 90	3 x 3 metres	3 x 6 metres	3 x 9 metres	3 x 12 metres
KRASO® BKP - floor - 3-fold	834 €	1.010 €	1.185 €	1.361 €

Type / Item	KRASO® BKP - floor - 2-fold			
incl. KRASO® FLS 90	2 x 3 metres	2 x 6 metres	2 x 9 metres	2 x 12 metres
KRASO® BKP - floor - 2-fold	553 €	670 €	787 €	904 €

Type / Item	KRASO® BKP - floor - 1-fold			
incl. KRASO® FLS 90	1 x 3 metres	1 x 6 metres	1 x 9 metres	1 x 12 metres
KRASO® BKP - floor - 1-fold	404 €	463 €	521 €	580 €

Scope of supply: the following details are for the **KRASO®** Builder's Convenience Box - floor - 4-fold with **KRASO®** FLS 90 (3 metres), the delivery is differing with regard to other designs (3-fold, 2-fold, 1-fold).

- foot
- foot extension
- pair of supporting bars
- height-adjustable base plate element 4-fold with gas- and water pressure tight **KRASO®** 4 Seal, trowel flange, visual check for locking-sleeve and pre-installed building period installation cover
- 4 x Flexible Empty Pipe System **KRASO®** FLS 90 (3 metres) with vulcanised locking-sleeve and closure cover
- height-adjustable **KRASO®** BKP Floor Screed Insert with protective cover and lubricant
- height fixation for **KRASO®** BKP Floor Screed Insert (2 pcs.)
- installation instructions **KRASO®** Builder's Convenience Box - floor
- folding rule
- **KRASO®** BKP - floor - extension set including
 - 8 x shrink hose 95/25
 - 4 x adapter tube DN 90 with protective cover
- installation kits including
 - **KRASO®** BKP - Sealing Insert - electricity/water - 2 pcs. with stepless onion ring technology 26 - 50 mm or blind
 - primary sealing + secondary sealing electricity/water
 - casing pipe end plugs including
 - end plug electricity/water - split -
 - hose connection 90/80

- **KRASO®** BKP - Sealing Insert - telecommunication - clamping range: 5 - 13 mm, 3 x 7 - 13 mm, 13 - 21 mm
 - primary sealing + secondary sealing telecommunication
 - casing pipe end plugs including
 - end plug telecommunication - split -
 - hose connection 90/80
- **KRASO®** BKP - Sealing Insert - electricity + telecommunication - clamping range: electricity 25 - 36 mm / telecommunication 2 x 5 - 10 mm, 3 x 7 - 14 mm
 - primary sealing + secondary sealing electricity + telecommunication
 - casing pipe end plugs including
 - end plug electricity + telecommunication
 - hose connection 80
 - a tube of lubricant

optionally available **KRASO®** BKP Gas Installation Kits:

- **Schuck DN 25** consists of primary and secondary sealing as well as gas end plug
- **RMA DN 25** consists of primary and secondary sealing as well as gas end plug
- **Voigt DN 25** consists of primary and secondary sealing as well as gas end plug
- **Voigt DN 32** consists of primary and secondary sealing as well as gas end plug

* TEUF = Top Edge Unfinished Floor, ** TEFF = Top Edge Finished Floor