



TECHNICAL DATA SHEET

KRASO® Cable Penetration KDS 150 – double wall penetration with trowel flange – G

Application areas

For the installation in waterproof concrete walls and later installation of media lines using **KRASO®** System Sealing Insert KDS 150 or for connecting of empty conduits using **KRASO®** System Cover; for a secure connection of bitumen coating.

Material

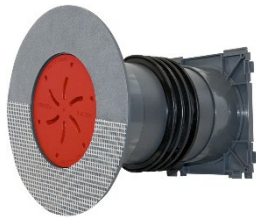
frame	PVC
pipe	PVC
4 seal	PVC
closure cover	ABS
trowel flange	PVC - G - tissue coated

Tests

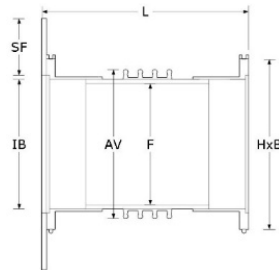
- Radon tight: Protects against a hazardous concentration of radioactive noble gas
- Made of shape- and pressure-resistant solid wall material with low abrasion! Installation possible even at low temperatures.
- Temperature resistance up to 60 °C.
- MPA tested up to 3.5 bar.
- Gas and odour-tight - High quality in accordance with the TA-Air.

Certificates [Find in our download area](#)

Product Image



Technical Drawing



Dimensions

L	15	17,5	20	24	25	30	35	36,5	40	45	50
HxB	210	210	210	210	210	210	210	210	210	210	210
AV	188	188	188	188	188	188	188	188	188	188	188
F	150	150	150	150	150	150	150	150	150	150	150
SF	70	70	70	70	70	70	70	70	70	70	70
Material thickness	5,0	5,0	5,0	5,0	5,0	5,0	5,0	5,0	5,0	5,0	5,0
IB	160	160	160	160	160	160	160	160	160	160	160
weight	1,6	1,7	1,8	1,9	1,9	2,0	2,1	2,2	2,3	2,4	2,5
Artikel-No.	KKDS150SF 7G150B	KKDS150SF 7G175B	KKDS150SF 7G200B	KKDS150SF 7G240B	KKDS150SF 7G250B	KKDS150SF 7G300B	KKDS150SF 7G350B	KKDS150SF 7G365B	KKDS150SF 7G400B	KKDS150SF 7G450B	KKDS150SF 7G500B

L | wall thicknesses (cm) • HxB | outer frame dimension (mm) • AV | Ø 4 Seal outside (mm) • F | Ø casing inside (mm) • IB | Ø bayonet fitting inside (mm)
 • material thickness | in mm • weight | in kg