



Floor

Builder's Convenience Box - floor - garden (p. 56) +

Wall

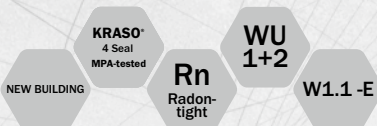
Builder's Convenience Box - wall - garden (p. 59) +

Accessories

BKP - Garden - Extension Set (p. 56) +



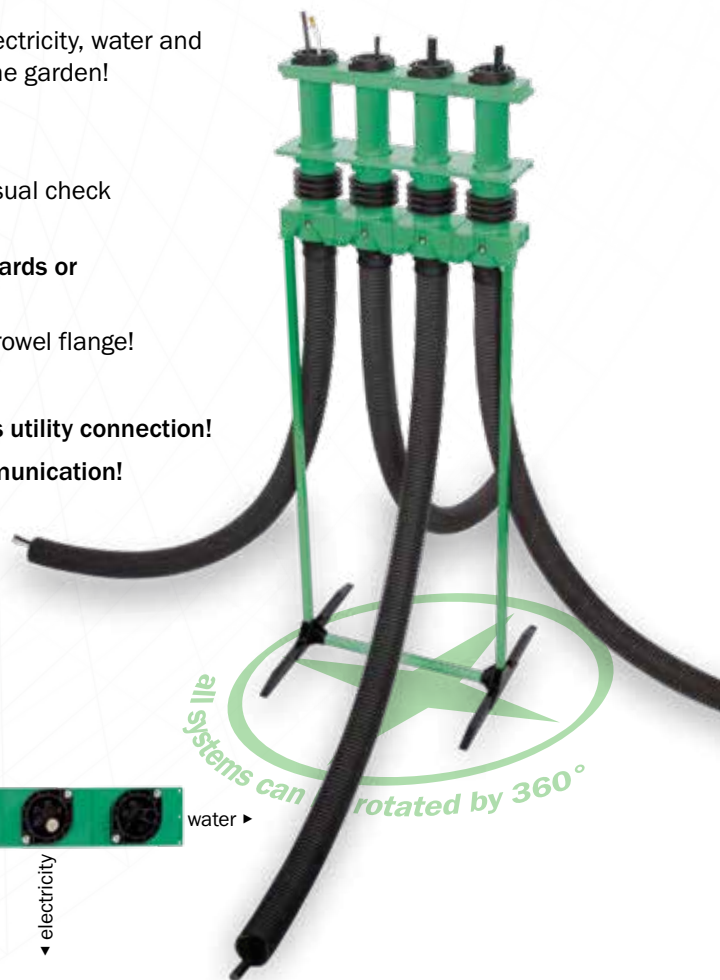
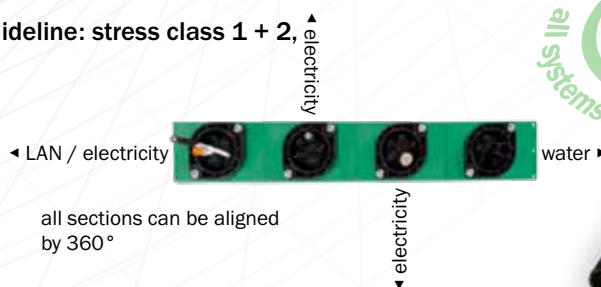
Convenience
for the garden:
Multi utility
connection /
outlet



KRASO® Builder's Convenience Box - floor - garden

For more convenience in the garden!

- + Choose the **KRASO® Builder's Convenience Box - floor - garden** for any project in your garden or courtyard: lighting, pool, garden sauna, wall box for electric cars etc.
- + **For buildings without basement:** simple and tight routing of electricity, water and telecommunication lines from the utility connection space to the garden!
- + **KRASO® 4 Seal** : exterior sealing of concrete: **10 bar!** Radon-tight! Resistant to methane gas!
- + **Simple installation** due to the stable installation device and visual check of the snap-on socket – **helps to avoid installation errors!**
- + For flush-mount installation in the base plate – **no tripping hazards or wall damages!** Including building period protective cover.
- + **Easy integration of vapour barrier foils** due to the roughened trowel flange!
- + **Height-adjustable** base plate and floor screed
- + **Combinable with KRASO® Builder's Convenience Box - floor** as utility connection!
- + Including **KRASO® BKP - Sealing Insert - electricity + telecommunication!** clamping range: electricity 25 - 36 mm, telecommunication 2 x 5 - 10 mm, 3 x 7 - 14 mm
- + **Optionally available KRASO® BKP - Sealing Inserts:**
 - **KRASO® BKP - Sealing Insert - electricity/water**
 - **KRASO® BKP - Sealing Insert - telecommunication**
- + **DafStB waterproof concrete guideline: stress class 1 + 2, DIN 18533 W1.1 - E**





KRASO® BKP
 - floor - garden = 1 system
Adaptable!
 Combinable with further sections!
 Also combinable with KRASO® BKP - floor!

KRASO® Builder's Convenience Box - floor - garden **LG 5**

single utility connection / outlet for electricity, water or telecommunication for buildings without basement incl. cable protective hose (DN 75, 10 metres), incl. installation kits for electricity + telecommunication | **DafStB waterproof concrete guideline: stress class 1 + 2, DIN 18533 W1.1-E**

Type / Item	KRASO® BKP - floor - garden - 1-fold
Height-adjustable to TEUF* in mm from ... to ...	1350 - 1400
Height-adjustable to TEFF** in mm from ... to ...	12 - 280
Bending radius in mm	≥ 1000
Dimensions floor screed insert wiping edge in mm	141 x 90
Incl. cable protective hose DN 75	1 x 10 metres
KRASO® BKP - floor - garden - 1-fold	194 €

Scope of supply: KRASO® Builder's Convenience Box - floor - garden - 1-fold with cable protective hose (10 metres)

- foot
- foot extension
- pair of supporting bars
- height-adjustable base plate element 1-fold with gas- and water pressure tight **KRASO® 4 Seal**, trowel flange, visual check for locking sleeve and pre-installed building period installation cover
- height-adjustable **KRASO® BKP Floor Screed Insert** with protective cover and lubricant
- height fixation for **KRASO® BKP Floor Screed Insert**
- installation instructions **KRASO® Builder's Convenience Box - floor**
- folding rule
- installation kit including
 - **KRASO® BKP - Sealing Insert - electricity + telecommunication** - clamping range: electricity 25 - 36 mm / telecommunication 2 x 5 - 10 mm, 3 x 7 - 14 mm
 - primary sealing + secondary sealing electricity + telecommunication
 - casing pipe end plugs included
 - end plug electricity + telecommunication
 - hose connection 80
 - a tube of lubricant

* TEUF = Top Edge Unfinished Floor,

** TEFF = Top Edge Finished Floor



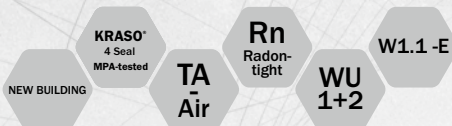
KRASO® BKP - garden - extension set **LG 5**

for the extension of the cable protective hoses of **KRASO® BKP - floor - garden** and **- wall - garden**, incl. 10 metres cable protective hose DN 75

Type / Item	KRASO® BKP - garden - extension set
KRASO® BKP - garden - extension set	60 €

Scope of supply: double sleeve DN 75, 2 sealing rings, 10 metres cable protective hose DN 75

Whether
inside or outside:
conveniently
connected

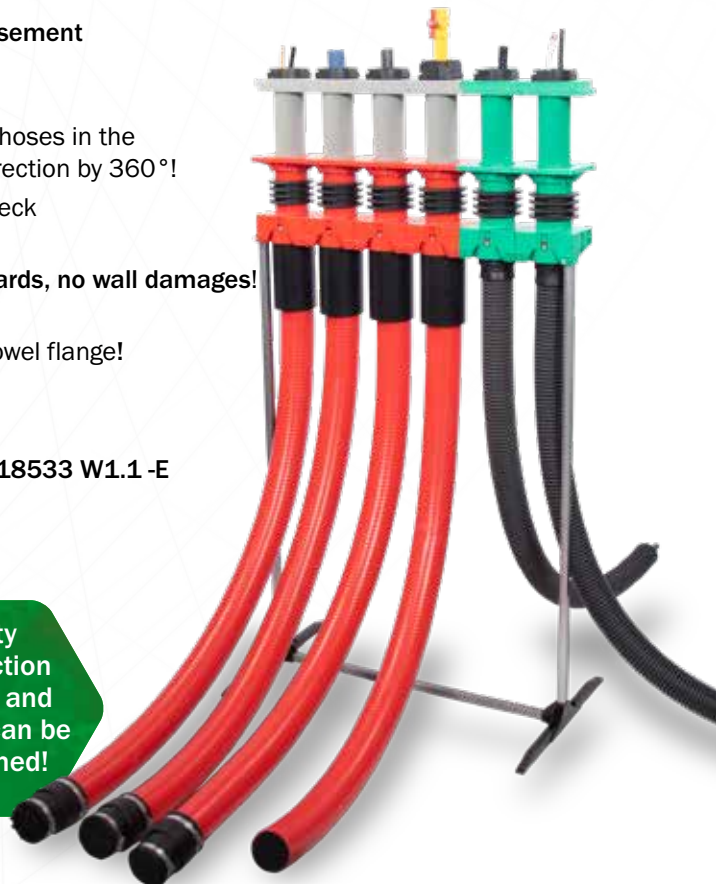


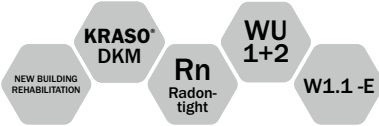
KRASO® Builder's Convenience Boxes for buildings without basement

The clever combination of utility connection
entries and outlets

- + **KRASO® Builder's Convenience Boxes for buildings without basement** can combine utility connection entries and outlets:
A clean solution for the utility connection space!
- + **Trendsetting:** flexible empty pipe systems and cable protective hoses in the **KRASO® Builder's Convenience Boxes** can be aligned in any direction by 360°!
- + **Easy installation** due to stable installation device and visual check of the snap-on-socket – **helps to avoid installation errors!**
- + For flush-mount installation in the base plate – **no tripping hazards, no wall damages!**
Including building period protective cover
- + Easy integration of vapour barrier foils due to the roughened trowel flange!
- + **Height-adjustable** base plate and floor screed
- + **Optionally available: KRASO® BKP - garden - extension set!**
- + **DafStB waterproof concrete guideline: stress class 1 + 2, DIN 18533 W1.1 -E**

utility
connection
entries and
outlets can be
combined!





optionally available
external sealing element

KRASO® Builder's Convenience Box - wall - garden

More convenience in the garden

- + Choose the **KRASO® Builder's Convenience Box - floor - garden** for any project in your garden or courtyard: lighting, pool, garden sauna, wall box for electric cars etc.
- + For core drilling and casing DN 200 (199 - 203 mm). **For precast walls and in-situ concrete walls!**
- + **Tight in waterproof concrete structures with stress class 1** (permanently or temporarily pressing water)
- + **Radon-tight! Resistant to methane gas!**
- + Torque Control Nut **KRASO® DKM: integrated torque limiter - no torque wrench required!**
- + Split end plugs for **easy installation!**
- + Ready for the utility connection of water, electricity and network lines: **tested in accordance with DVGW!** Including **KRASO® BKP - Sealing Inserts for electricity/water (2 x), telecommunication, electricity + telecommunication**
- + Optionally available: external sealing element with **flange according to DIN 18533!** Seal: 80 mm
- + **DafStB waterproof concrete guideline: stress class 1 + 2, with optional external sealing element DIN 18533 W1-E and W2.1-E**

KRASO® Builder's Convenience Box - wall - garden **LG5**

multi utility connection for electricity, water or telecommunication for buildings with basement, incl. installation kits for electricity/water (2 x), telecommunication, electricity + telecommunication | **DafStB waterproof concrete guideline: stress class 1 + 2, optional external sealing element DIN 18533 W1-E and W2.1-E**

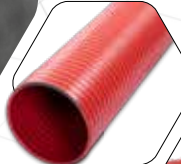
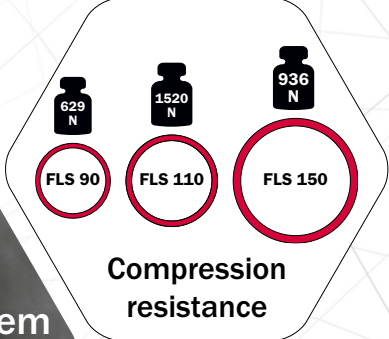
Type / Item	KRASO® BKP - wall - garden
Wall thickness from ... to ...	200 - 500 mm
Diameter core drilling min ... max ...	199 - 203 mm
Length complete system	750 mm
Length x width internal sealing element	225 x 225 mm
Diameter external sealing element (optionally available)	300 mm
Internal diameter casing pipes	68 mm
External diameter casing pipes	75 mm
KRASO® BKP - wall - garden	554 €
Optional external sealing element	225 €

Scope of supply:

- **KRASO® Builder's Convenience Box - wall - garden** including
 - internal sealing element with pre-installed casing pipes incl. protective cover for the installation of supply lines such as water, electricity, telecommunication
- installation instructions **KRASO® Builder's Convenience Box - wall**
- folding rule
- installation kits including
 - **KRASO® BKP - Sealing Insert - electricity/water - 2 pcs.** with stepless onion ring technology 26 - 50 mm or blind
 - primary sealing + secondary sealing electricity/water
 - end plug
 - **KRASO® BKP - Sealing Insert - telecommunication -** clamping range: 5 - 13 mm, 3 x 7 - 13 mm, 13 - 21 mm
 - primary sealing + secondary sealing telecommunication
 - end plug
 - **KRASO® BKP - Sealing Insert - electricity + telecommunication -** clamping range: electricity 25 - 36 mm / telecommunication 2 x 5 - 10 mm, 3 x 7 - 14 mm
 - primary sealing + secondary sealing electricity + telecommunication
 - end plug
 - a tube of lubricant
- Optionally available: external sealing element



**Flexible Empty Pipe System
KRASO® FLS – sturdy and flexible!**

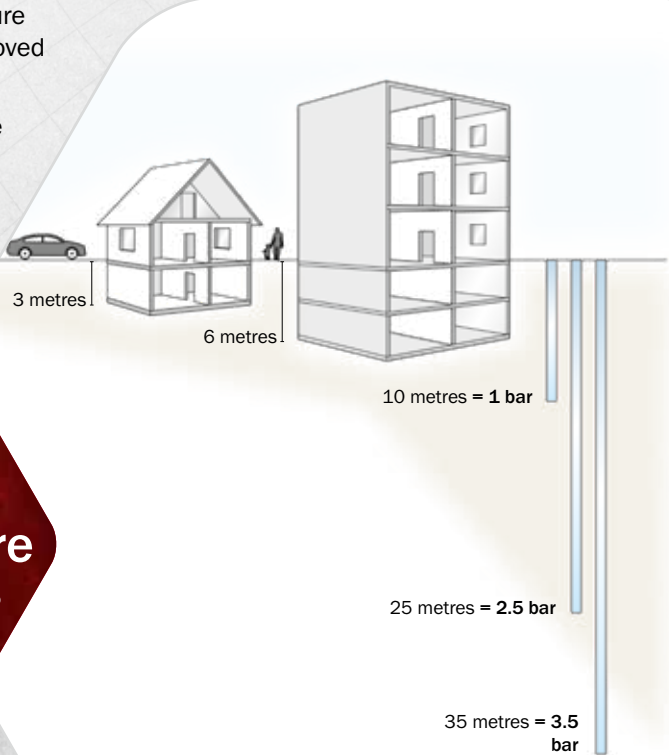


KRASO® FLS 90
spiral made of hard PVC



- + The Flexible Empty Pipe System **KRASO® FLS** is a cable protective hose which is a.o. part of the delivery of the **KRASO® Builder's Convenience Boxes** for buildings without basement. The **KRASO® FLS** can also be used as an extension.
- + **Compression resistance:** 629 Newton (**KRASO® FLS 90**) or 936 Newton (**KRASO® FLS 150**)
- + Tests according to **DIN EN 61386-24** lead to the following classifications: compressive stress = type 250, impact resistance = normal, classification code = N250
- + Smooth interior and exterior, flexible, **enhanced pressure and vacuum resistance, high axial stability**, resistant to alkalis and acids, resistant to brine and sea water, good UV and ozone resister, gas-tight and liquid-tight, RoH-compliant (Restriction of Hazardous Substances)

- + You may receive a test certificate regarding the water pressure tightness for the majority of our products issued by an approved material testing. However, what does that mean?
- + Water pressure tightness is a theoretical value, stated in the unit "bar", providing information regarding the pressure at which a component remains water-tight.
- + With a so-called water column that is 10 metres high, the resulting pressure is 1 bar. At a height of 25 metres this is 2.5 bar, at 35 metres 3.5 bar, etc.



What does water pressure tight mean?